

# THROUGH THE TRUTH

---

## STAGE

- Min. dimensions 8x8m
- Black box
- 3+3 side scarves  
(in case the auditorium is also on the sides of the stage, the scarves are not absolutely necessary)
- Black marley floor - Covering the entire area of the stage, ideally laid out horizontally from left to right. However, if this is not possible inform about this ahead of time
- Dance mats in the size of the used stage surface with a thickness of ideally 10-20mm

## RIGGING

- 3 suspension points with a load capacity of 500 kg min. 8 m above floor level
- 1 anchor point on the ground 500kg (not necessary in case of using acrobatic motor)
- separate supply 230V/10A for acrobatic motor (TBC in advance)

## POSITION

The position is not completely fixed, but adapts to the possibilities of anchor points and the distribution of props on the stage (the size of the stage).

## SMALL CIRCLE

- small circle hangs on static rope 10.5mm
- from the audience's point of view, it is located on the right side of the stage
- the depth of the location is in the back third of the stage (approximately 3-4m from the back wall)
- from the side about 4-5 m from the right legs
- the lower edge of the circle in the height of 1,2 m from the floor
- the small circle is pulled down during the show from the side from behind the black box – the exact process to be agreed on according to the possibilities of the venue

## LARGE CIRCLE

- from the audience's point of view, it is located on the left side of the stage
- depth: approximately in the middle of the stage (approximately 5-6m from the back wall)
- from the side about 4-5 m from the left leg

## PULLEY

- from the audience's point of view, it is located on the left side of the stage
- depth: approximately in the middle of the stage (approximately 5-6m from the back wall)
- from the side about 4-5 m from the left leg

## SOUND

High-quality sound equipment of renowned brands of the adequate size for the area. Please cover the "deaf" places by front fills and delay boxes. The main speakers must be placed above the audience's heads and supplemented with subwoofers of adequate power.

## MONITOR

4 Quality monitors divided in 2 stereo ways.

Monitors to be placed in the corners in the adequate angle (L-Acoustics X12...) or supported as needed, possibly on a stand.

## FOH

Quality smaller analogue or digital mixing desk with the option of connecting a PC or player via stereo Jack 3.5mm or 2x mono Jack 6.3mm.

## VIDEO

FULL HD video projector min 4500ANSI with appropriate lens for projection onto a suspended mirror measuring 150x125cm, covering its entire surface, suspended on LX2 (see lightplot)

The mirror is suspended approx. 1.5m below the LX3 (see lightplot).

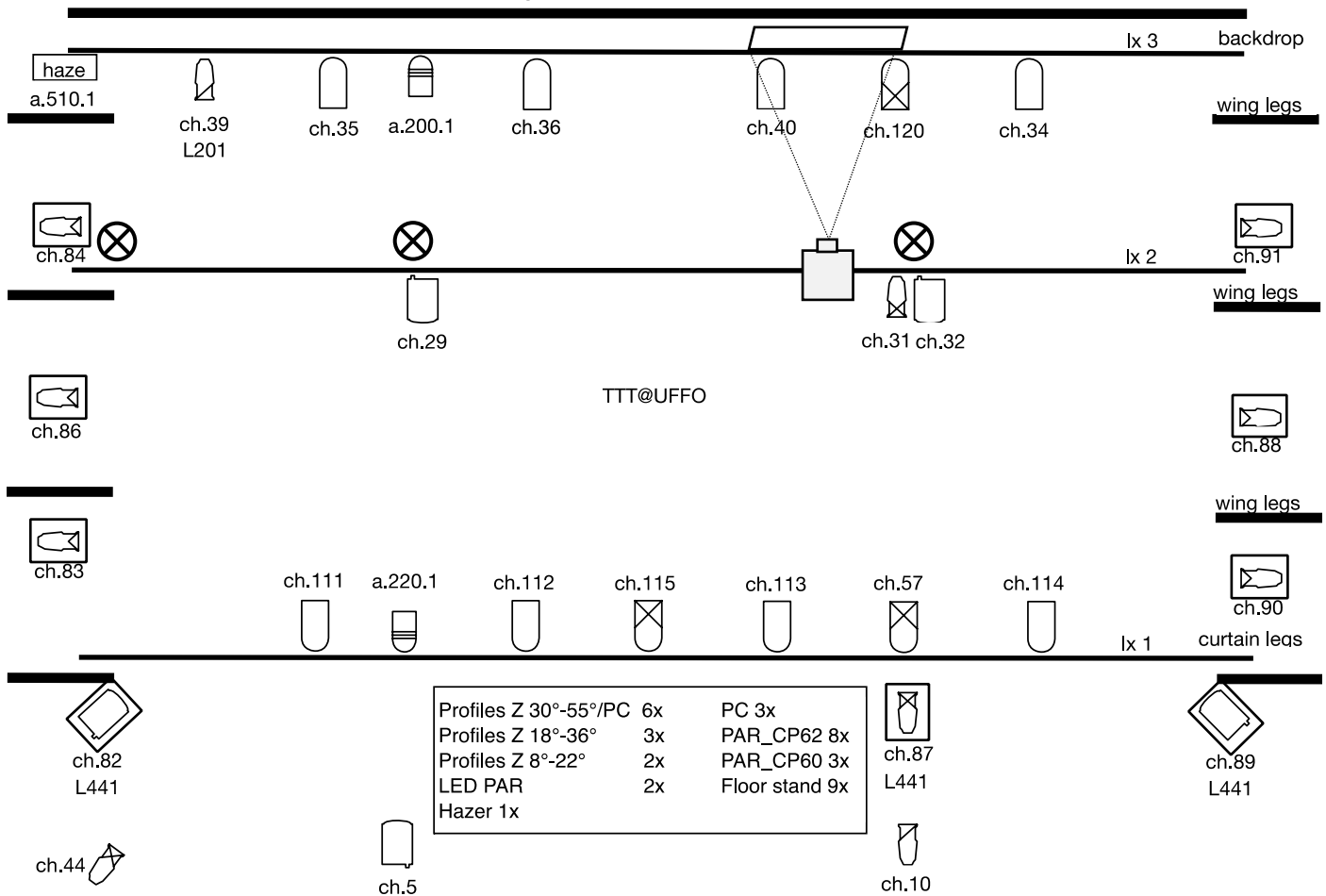
Connection via HDMI at the light desk.

## LIGHTS

- Chamsys MQ series lighting console
- see lightplot for the distribution of lights

## Dressing Room

-1 for the artist with bathroom if possible, water and towel



## CONTACTS

Ondřej Beier  
lights/video  
+420 775 217 287  
[beier@uffo.cz](mailto:beier@uffo.cz)

Radek Ježek  
sound/video  
+420 605 581 272  
[jezek@uffo.cz](mailto:jezek@uffo.cz)

Tomáš Pintér  
rigging  
+420 603 456 748  
[tomas@airgym.cz](mailto:tomas@airgym.cz)